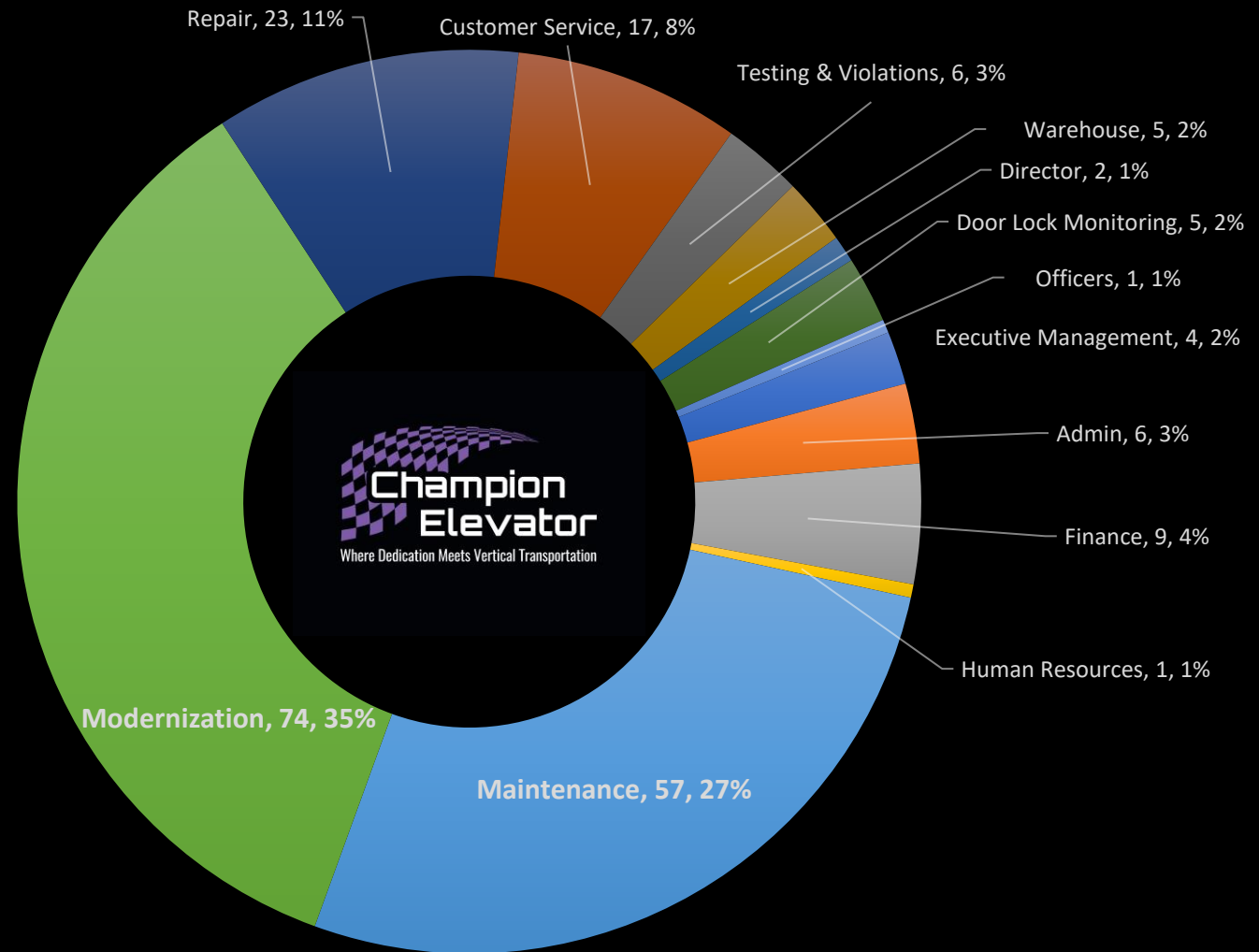


# NOVEMBER 2020 CHAMPION ELEVATOR 210 EMPLOYEES AT YOUR SERVICE!



- Executive Management
- Admin
- Finance
- Human Resources
- Maintenance
- Modernization
- Repair
- Customer Service
- Testing & Violations
- Warehouse
- Director
- Door Lock Monitoring
- Officers